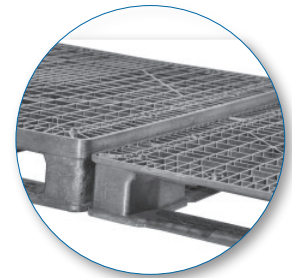
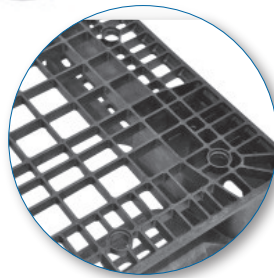
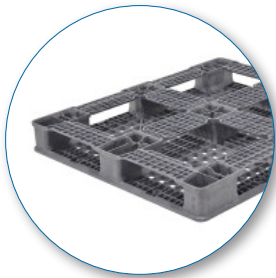


STK 210



Technical Data

DIMENSIONS	48" x 40" x 5.13"
WEIGHT	34 LBS
DYNAMIC CAPACITY	4,000 LBS
STATIC CAPACITY	20,000 LBS
ENTRY	4-WAY ENTRY
PALLETS PER STACK	17 LTL
TRUCKLOAD QUANTITY	600

Handling Data

NESTABLE	NO
STACKABLE	YES
RACKABLE	SUPPORTED
REUSABILITY	YES
WASHABLE	YES
FOOD GRADE	YES
PHARMACEUTICAL	YES

Features

- Hygienic design
- One piece pallet
- FDA / USDA approved materials
- Impervious to acids, fats, solvents and odors
- Resists water absorption & bacteria growth
- Dimensionally accurate

Deck Specs

TOP DECK	VENTILATED
BOTTOM DECK	CRUCIFORM

Materials and Colors

CONDITION	NEW
MATERIAL	PE / PP / FM & REINFORCED
COLOR	BLACK

Part Number

5202210