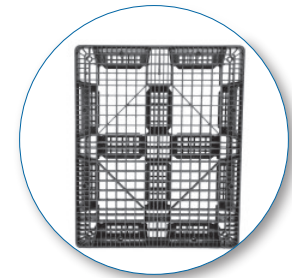
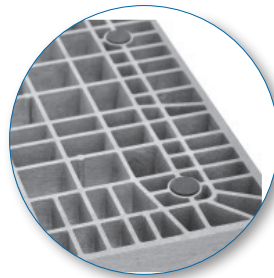
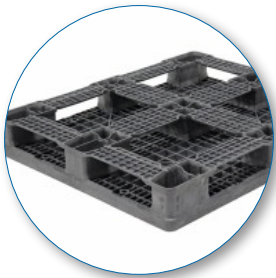


800-404-2311

sales@phspallet.com

1500 Scottsdale Ct, Ste. 100, Elgin, IL 60123

RCK 111



Technical Data

DIMENSIONS	40" x 48" x 6.25"
WEIGHT	57 LBS
DYNAMIC CAPACITY	5,000 LBS
STATIC CAPACITY	20,000 LBS
RACKING CAPACITY	2,800 LBS
ENTRY	4-WAY ENTRY
PALLETS PER STACK	15 LTL
TRUCKLOAD QUANTITY	510

Handling Data

NESTABLE	NO
STACKABLE	YES
RACKABLE	5000 SUPPORTED
REUSABILITY	YES
WASHABLE	YES
FOOD GRADE	YES
PHARMACEUTICAL	YES

Features

- Hygienic design
- One piece pallet
- FDA / USDA approved materials
- Impervious to acids, fats, solvents and odors
- Resists water absorption & bacteria growth
- Consistency dimensionally accurate

Deck Specs

TOP DECK	VENTILATED
BOTTOM DECK	CRUCIFORM

Materials and Colors

CONDITION	NEW
MATERIAL	REINFORCED
COLOR	BLACK

Part Number

5202111