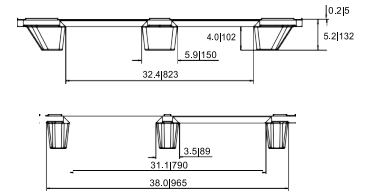
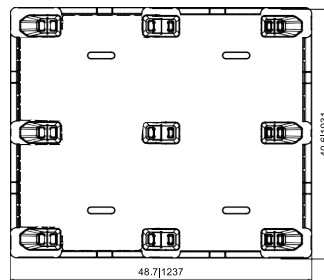
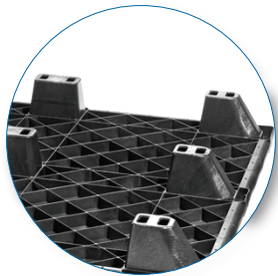
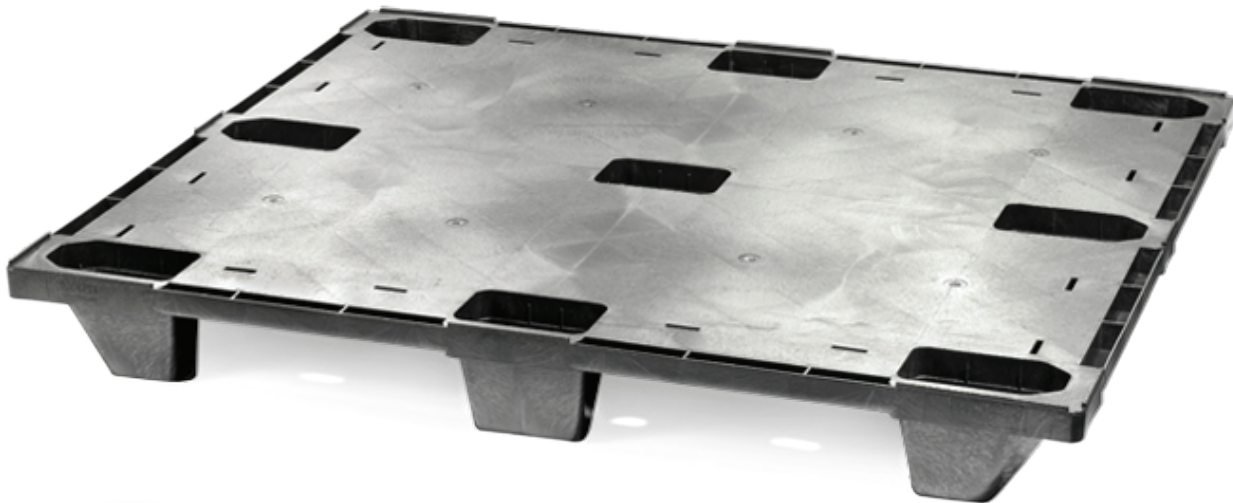


## EXP 102



### Technical Data

<b>DIMENSIONS</b>	40" x 48" x 5.2"
<b>WEIGHT</b>	16.5 LBS
<b>DYNAMIC CAPACITY</b>	2,200 LBS
<b>STATIC CAPACITY</b>	3,500 LBS
<b>ENTRY</b>	4-WAY ENTRY
<b>PALLETS PER STACK</b>	78 TL / 73 LTL
<b>TRUCKLOAD QUANTITY</b>	2,340

### Handling Data

<b>NESTABLE</b>	YES
<b>STACKABLE</b>	NO
<b>RACKABLE</b>	SUPPORTED
<b>REUSABILITY</b>	ONE-WAY
<b>DESTINATION</b>	DOMESTIC/INT'L
<b>AIRFREIGHT</b>	YES
<b>ISPM-A5 EXEMPT</b>	YES
<b>FOOD GRADE</b>	YES
<b>PHARMACEUTICAL</b>	YES

### Features

- Lightweight and low height
- Nesting saves storage & shipping costs
- Low-cost plastic pallet
- Impervious to acids, fats, solvents and odors
- Resists water absorption & bacteria growth
- Consistency dimensionally accurate
- Exempt from ISPM 15 shipping regulations

### Deck Specs

<b>TOP DECK</b>	FLAT TOP
<b>BOTTOM DECK</b>	9 BLOCK

### Materials and Colors

<b>CONDITION</b>	NEW
<b>MATERIAL</b>	PE/PP BLEND
<b>COLOR</b>	BLACK

### Part Number

**5701102**