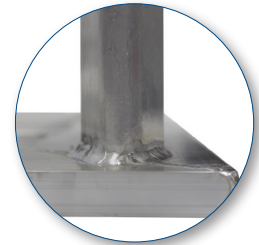
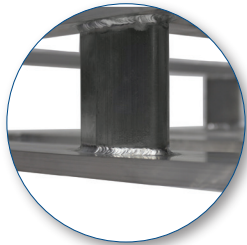
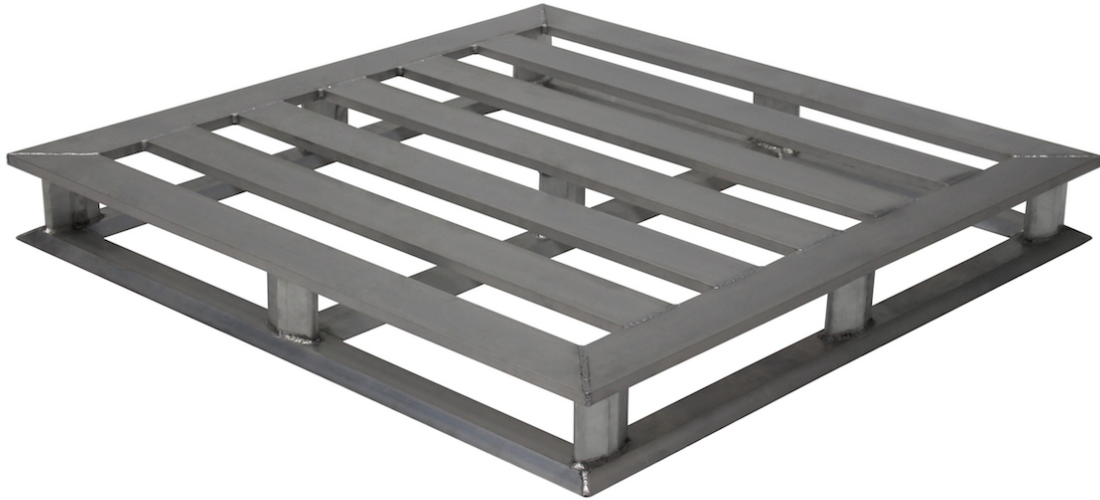


PHS ALUMINUM 4848



Technical Data

DIMENSIONS	48" x 48" x 5.7"
WEIGHT	46 LBS
DYNAMIC CAPACITY	6,000 LBS
STATIC CAPACITY	30,000 LBS
ENTRY	4-WAY ENTRY
PALLETS PER STACK	16 LTL
TRUCKLOAD QUANTITY	510

Handling Data

NESTABLE	NO
STACKABLE	YES
SUPPORTED RACKABLE CAPACITY	6,000 LBS
EDGE RACKABLE CAPACITY	3,500 LBS
WASHABLE	YES
FOOD GRADE	YES
PHARMACEUTICAL	YES

Features

- FDA & USDA
- One-piece Construction
- Fire Retardant
- Hygienic Design
- Washable
- Seal Welded
- AR/SR
- Recyclable

Deck Specs

TOP DECK	VENTILATED
BOTTOM DECK	CRUCIFORM

Materials and Colors

CONDITION	NEW
MATERIAL	ALUMINUM

Part Number

5104848